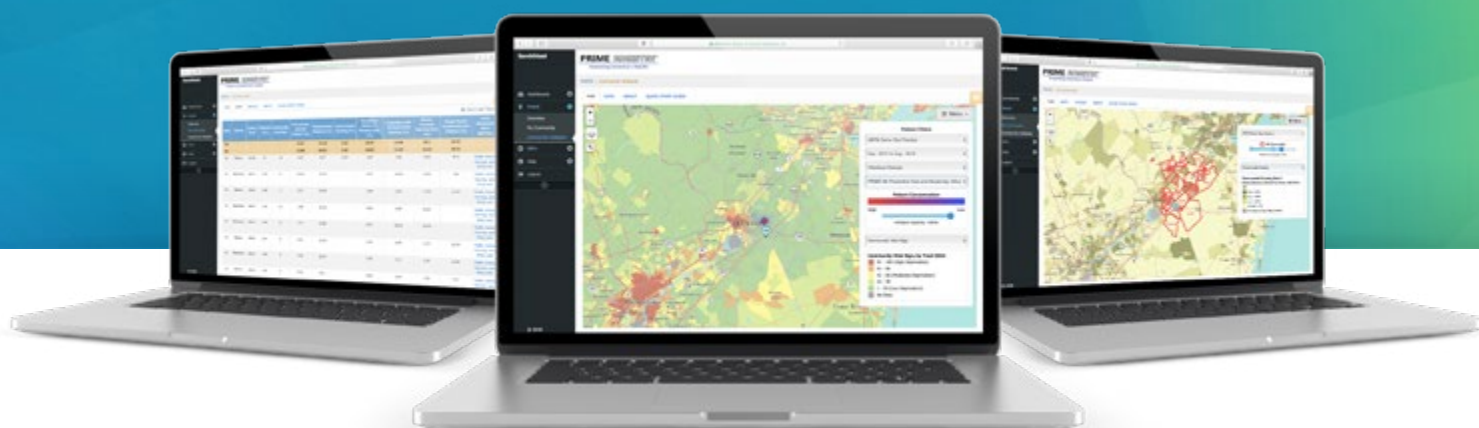




P H A T E



PHATE Quickstart Guide

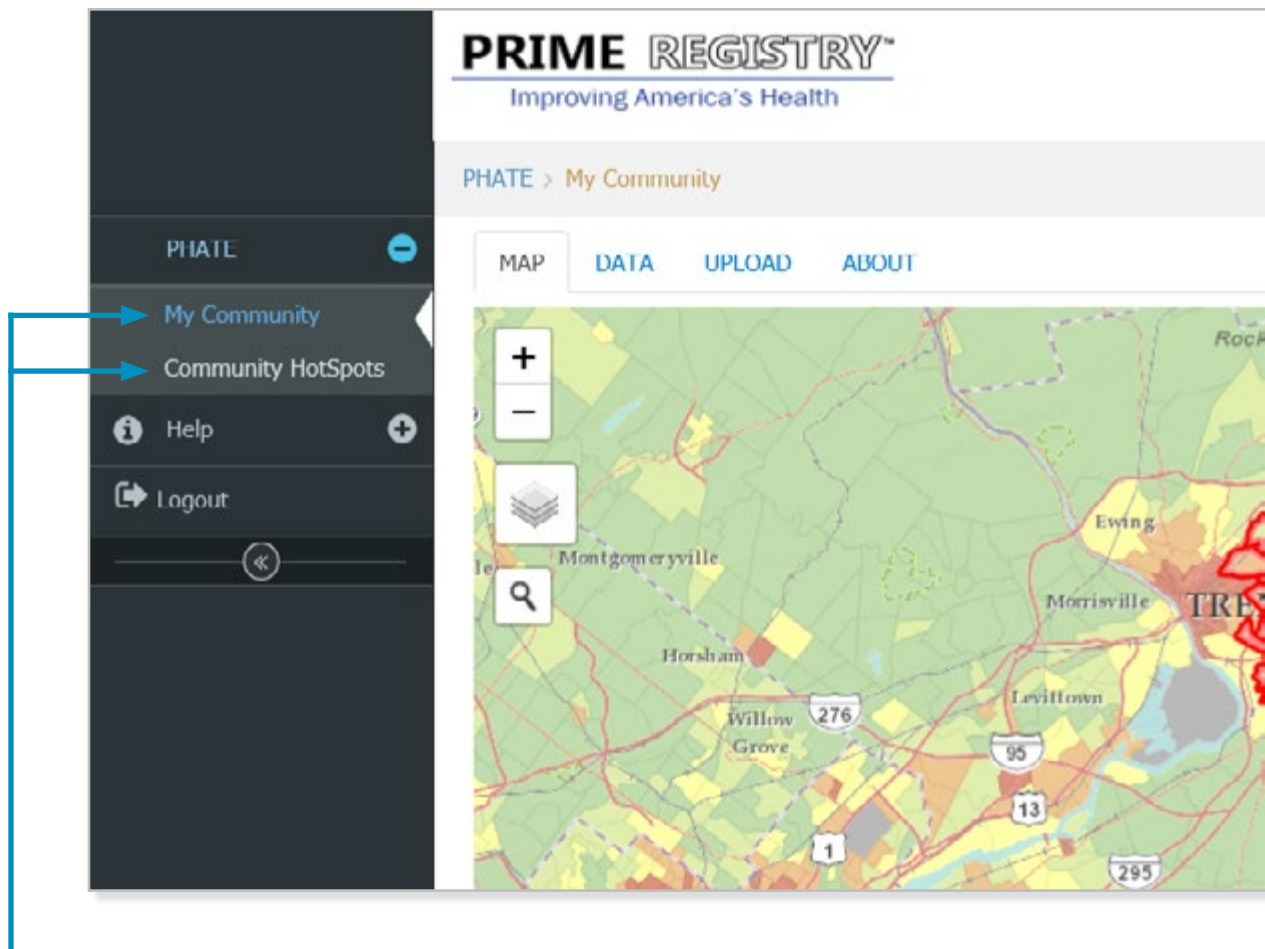
PHATE is a population health tool that provides clinicians with a fuller understanding of their patient population in the context of their community. When used within the PRIME Registry, PHATE utilizes patient data from the registry to assign a Community Vital Sign to an individual patient based on Census Tract characteristics, and shows Social Determinants of Health across a practice's service or geographic area. The resulting reports and

information help clinicians and practices better understand the characteristics of patient risks, illuminating local resources and opportunities for assistance, intervention and improvement.

PHATE can be used with manually uploaded records, however enrolling in PRIME Registry will provide the fullest experience in PHATE.

Getting Started

PHATE consists of two tools located in the left navigation bar of the dashboard:

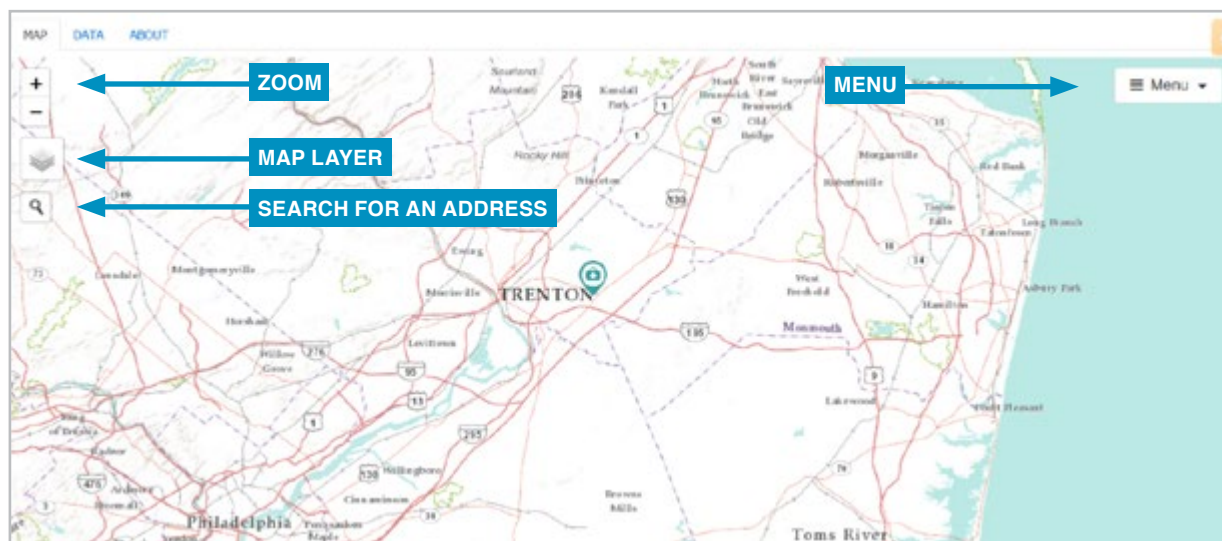


My Community and Community HotSpots

My Community allows the user to view and download community characteristics in relation to the user's service area. This area may be defined by the user, using their practice data from the PRIME Registry, selecting census tracts, or uploading patient addresses.

Community HotSpots allows the user to view and download data on hot spots or clusters of poor disease control or gaps in quality from the user's electronic health record data, and view how those hot spots relate to the community characteristics.

Navigation Tools



MAP LAYER ICON: View different base maps. Hover over map icon to choose from two base maps. “Imagery” shows satellite images. “Community Vital Sign” shows social determinant data by census tract.

MENU: Use the drop-down menus to adjust the data selected and displayed on the map based on which tool is being used (My Community or Community HotSpots).

SEARCH: Magnifying glass icon allows you to search for a specific address on a map. Once you have entered the address, PHATE brings you to the census tract where that address is located.

ZOOM: Zoom in and out. Double clicking on map also zooms in.



THREE TABS AT TOP

DATA TAB: provides the data underlying the maps in a table.

UPLOAD TAB: allows you to upload your own data. This is relevant to displaying your own clinic's service area.

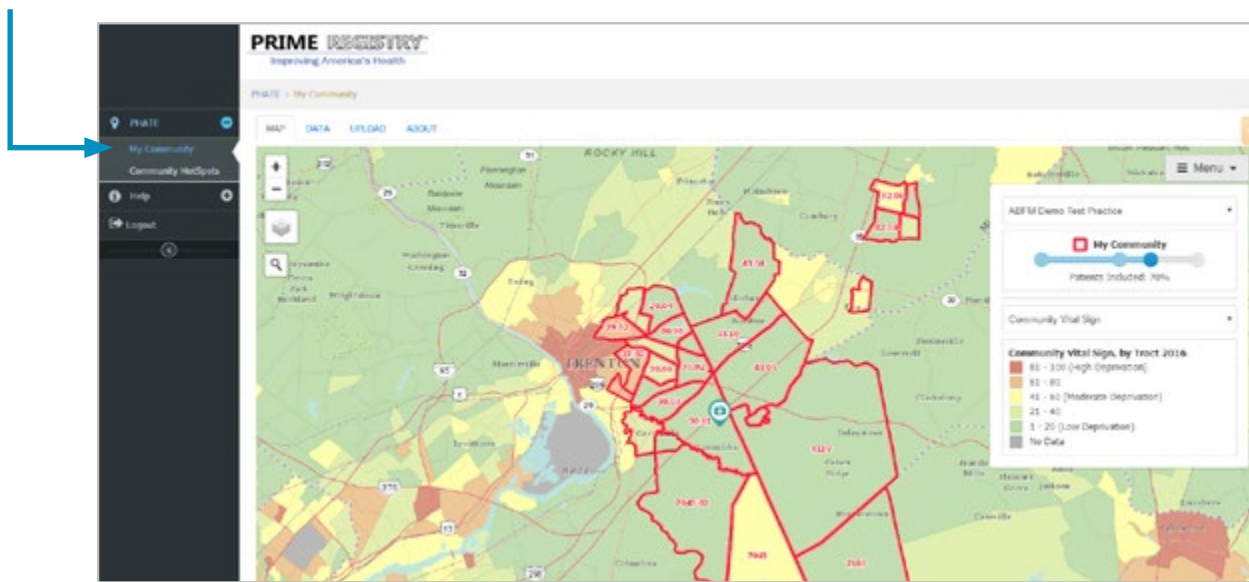
ABOUT TAB: provides additional information about the data sources.

Using My Community

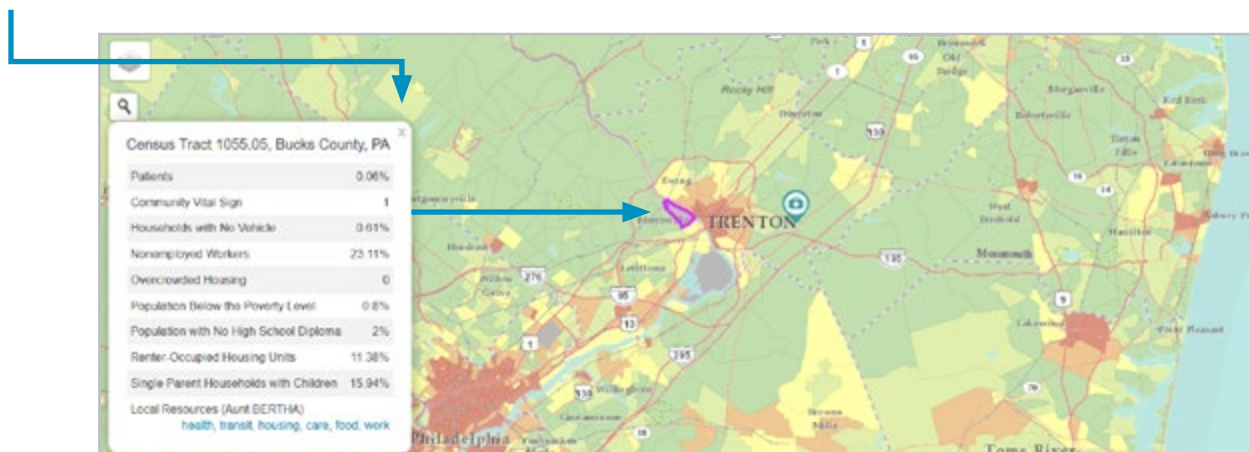
My Community allows you to view the service area, which is the community or communities served by the clinic. For PRIME Registry users, this area is set by the data in your registry dashboard.

Each geographic unit you see on the map is a census tract. If you click on a census tract, additional information about that census tract appears, including the census tract number, county, and neighborhood characteristics.

Select **My Community** on the navigation menu on the left side of the screen.



Click on the **X** in the top right corner of the call-out box to close information about the census tract.



Depending on the social determinant data selected and service area percentage, the underlying data can be viewed by selecting the **"Data"** tab.

The **"Patient (%)"** column is the percentage of the clinic's patients living in that census tract. This view

allows you to compare social determinant data for your community against state and national averages (the top two rows).

The table can be exported to a spreadsheet (click on the **"Download Table"** icon). Back in the MAP view,

State	County	Census Tract	Patients (%)	Community Vital Sign	Households with No Vehicle (%)	Nonemployed Workers (%)	Overcrowded Housing (%)	Population Below the Poverty Level (%)	Population with No High School Diploma (%)	Renter-Occupied Housing Units (%)	Single Parent Households with Children (%)	Local Resources (Aunt BERTHA)
US					9.09	32.43	3.33	15.47	13.48	36.1	34.61	
NJ					11.60	30.61	3.25	10.82	11.49	35.53	30.51	
NJ	Mercer	43.10	12.64	10	6.37	24.7	0.33	1.27	3.92	18.64	10.4	health, transit, housing, care, food, work
NJ	Mercer	43.09	5.78	3	2.37	24.53		1.67	3.23	14.53	11.67	health, transit, housing, care, food, work
NJ	Mercer	30.02	4.02	8	2.45	22.54		1.16	6.09	5.73	22.34	health, transit, housing, care, food, work
NJ	Mercer	30.06	3.45	5	6.95	19.7		0.63	3.74	7.33	7.67	health, transit, housing, care, food, work

Under Local Resources, PHATE provides links to [Aunt Bertha](#), a free website that collates community resources in your community.

PHATE links the census tract to its commensurate zip code and allows you to search across six domains

(health, transit, housing, care, food, and work). Clicking on the links takes you to the Aunt Bertha page for that zip code and domain. For instance, clicking on **"housing"** for census tract 43.10 in Mercer County takes you to this Aunt Bertha page which provides information for housing resources in this zip code.

Aunt BERTHA | Connecting People and Programs

Sign Up Log In Support

Zip or keyword or program name

Select Language

FOOD HOUSING GOODS TRANSIT HEALTH MONEY CARE EDUCATION WORK LEGAL

Trenton, NJ (06691) showing results for search: **housing** < 1 - 50 of 288 >

Sort by Best Match Close

Program Filters **Personal Filters** **Income Eligibility**

Open Hours
☐ Open Now
☐ Open Late
☐ Open Early
☐ Open Weekends
☐ Open 24 Hours

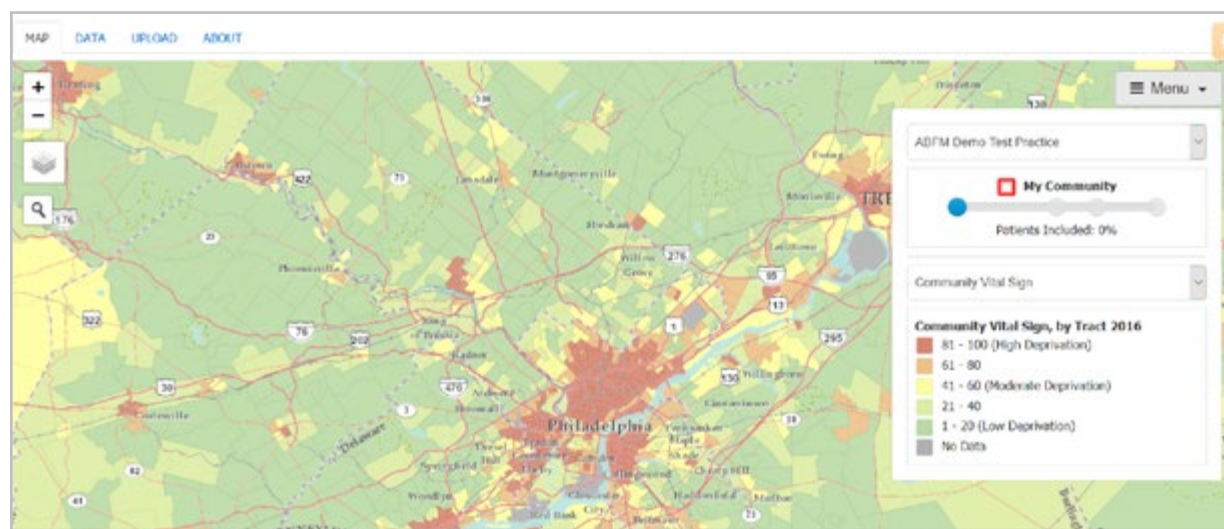
Cost
☐ Free
☐ Reduced Cost

Program communicates in

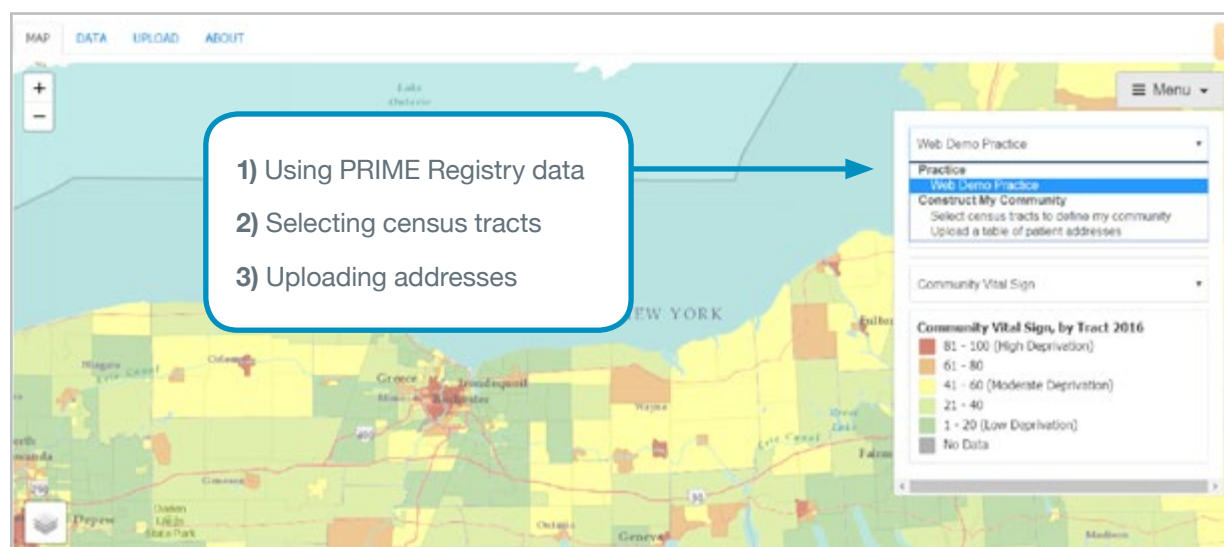
Filter Search

Back in the MAP view, if you click on Menu, a drop-down menu appears. Here, you can:

- 1) Select amount of census tracts to include in your service area (more on this later)
- 2) Change the neighborhood data displayed



If you click on the first drop down menu, you will see three options for identifying your service area:

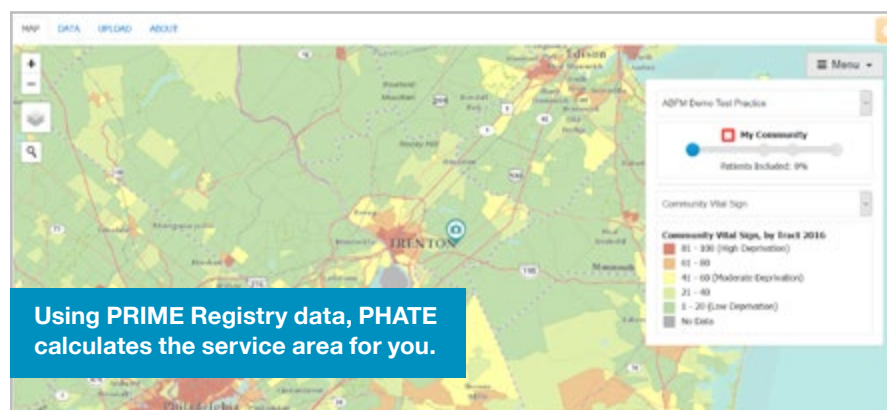


This brings us to the three options for defining your service area...

Three Options for Creating Your Service Area

Users	Service area can be viewed automatically in PHATE	Service area can be selected by the user	Service area can be viewed by uploading addresses
Connected to the PRIME Registry	Yes	Yes	Yes (but PHATE automatically does this for you)
Not connected to PRIME and have addresses	No	Yes	Yes
Not connected to PRIME and do not have addresses	No	Yes	No

Calculate Service Area Using Prime Data



Here, the slider is at 0%; therefore, no census tracts are displayed. The slider in the Menu window can be moved to select any service area percentage you choose.



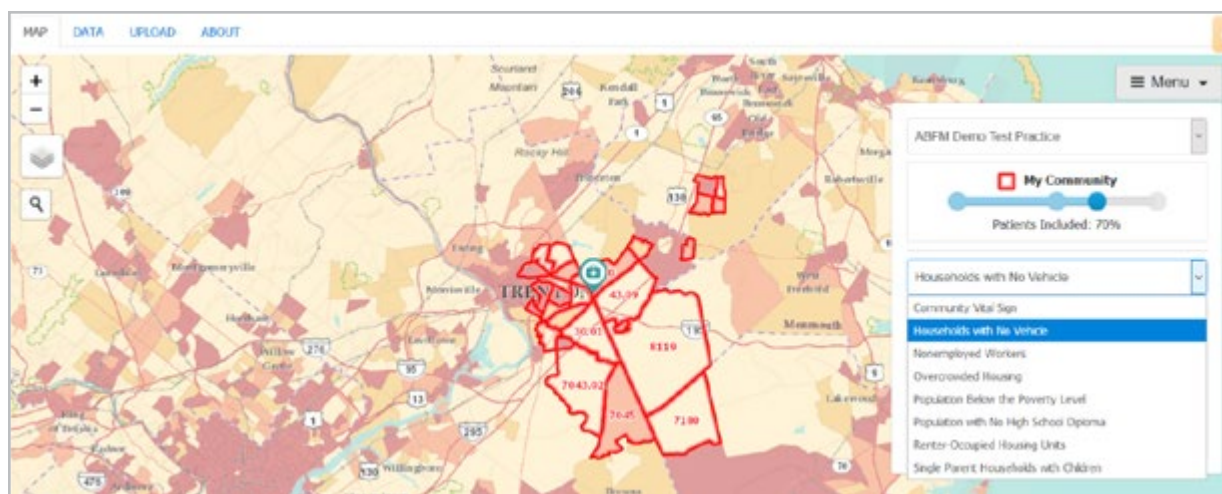
70% Service Area



100% Service Area

Community Variables

If you click on the up/down arrow by the social determinant dimension, a drop-down menu appears with additional options. In the map below, PHATE is displaying the % of the census tract with households with no vehicles.



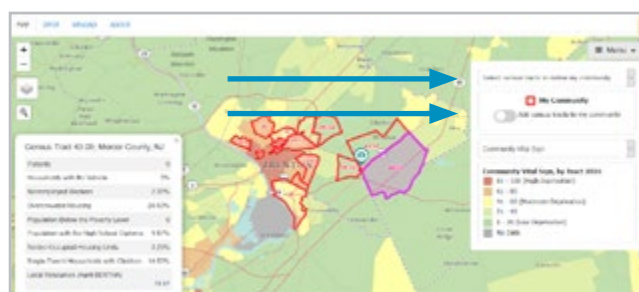
Creating A Service Area Map Without Prime Data

Use Census tracts


To select census tracts to define your service area, first click on “Select census tracts to define my community” under the first drop down menu. Ensure that the “Add census tracts to my community” button is highlighted. You can then click on the census tracts that you think are in your clinic’s service area.

Clicking on the census tract a second time de-selects the census tract in case you wanted to change the census tracts in your service area. second time de-selects the census tract in case you wanted to change the census tracts in your service area.


If you de-select the “Add census tracts to my community” button, then you can click on a census tract and see additional information about it.



The census tracts in the data tab (shown below) are those that we selected.



<div>MAP DATA UPLOAD ABOUT</div> <div>Download Table</div>											
State	County	Census Tract	Patients (%)	Households with No Vehicle (%)	Nonemployed Workers (%)	Overcrowded Housing (%)	Population Below the Poverty Level (%)	Population with No High School Diploma (%)	Renter-Occupied Housing Units (%)	Single Parent Households with Children (%)	Local Resources (Aunt BERTHA)
US					9.09	32.43	3.33	15.47	13.48	36.1	34.61
NJ					11.68	30.61	3.25	10.82	11.49	35.53	30.51
NJ	Mercer	15		96	34.55	43.08	3.34	34.98	30.18	58.36	71.24
NJ	Mercer	29.02		63	9.2	27.73	2.34	8.14	8.85	48.55	55.98
NJ	Mercer	19		99	36.53	44.12	11.48	54.17	36.21	55.95	53.31
NJ	Mercer	18		92	17.16	43.66	8.89	30.36	27.52	62.95	48.26
NJ	Mercer	31		52	8.81	24.98	3.33	8.94	11.63	30.3	27.48
NJ	Mercer	35		66	19.21	30.29	2.6	14.27	12.12	29.77	26.99
NJ	Mercer	13		69	18.27	61.8	0.71	13.62	17.12	29.66	53.07
NJ	Mercer	27.02		69	11.28	31.67	3.88	12.31	11.99	60.55	36.08
NJ	Mercer	26.02		66	10.65	22.26	0.98	12.88	11.5	40.88	50.58
NJ	Mercer	25		48	5.18	33.36	3.68	4.39	14.57	23.92	27.26
NJ	Mercer	29.04		11	3.94	20.93		1.77	7.52	18.96	22.08
NJ	Mercer	29.03		33	3.71	30.46	2.21	11.59	13.74	12.14	19.88



NEXT: The final method for mapping your service area is uploading patient addresses.

Create Service Area Map Without Prime Data

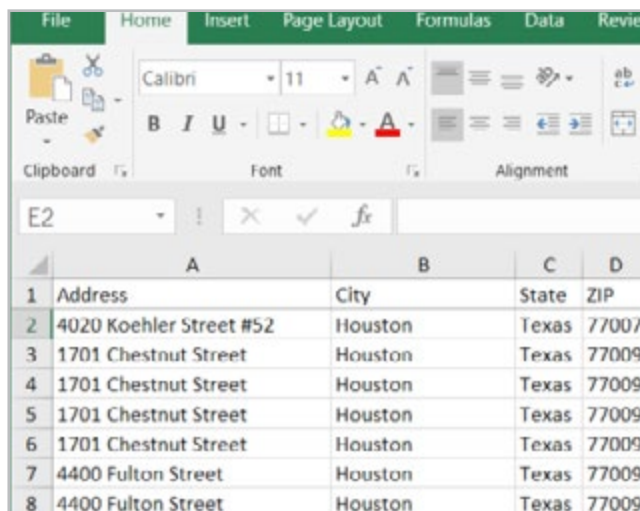
Upload Addresses

First, you will need to work with your practice administrator and / or your information technology staff to **obtain a list of patient addresses**. Depending on your interests, you will need to provide direction regarding which people to include.

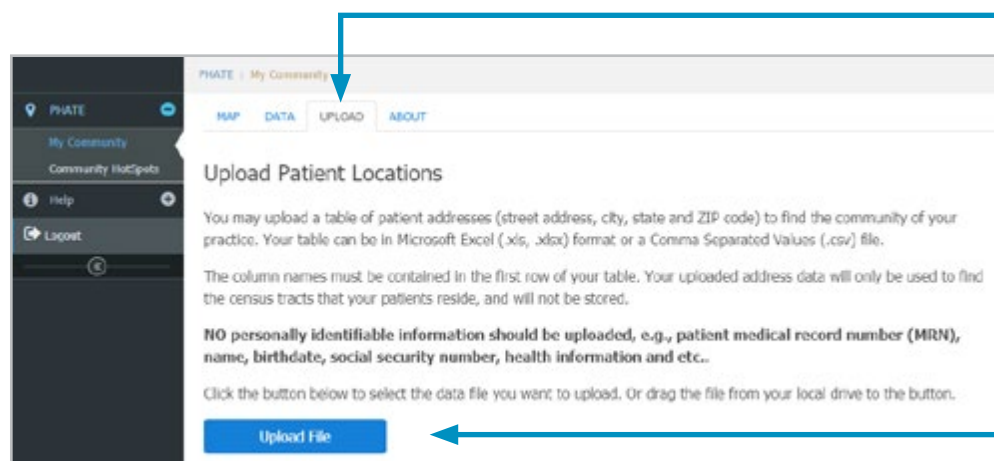
For example, you may want to include only patients in a certain age range, or patients with visits in a certain date range, etc. An example of a query would be:

Include patients of all ages who have been seen once in our clinic over the past 5 years

Once you have the list of patients, you will need to insert them into a spreadsheet with the following column labels: **Address, City, State, Zip**



	A	B	C	D
1	Address	City	State	ZIP
2	4020 Koehler Street #52	Houston	Texas	77007
3	1701 Chestnut Street	Houston	Texas	77009
4	1701 Chestnut Street	Houston	Texas	77009
5	1701 Chestnut Street	Houston	Texas	77009
6	1701 Chestnut Street	Houston	Texas	77009
7	4400 Fulton Street	Houston	Texas	77009
8	4400 Fulton Street	Houston	Texas	77009



PHATE : My Community

MAP DATA **UPLOAD** ABOUT

Upload Patient Locations

You may upload a table of patient addresses (street address, city, state and ZIP code) to find the community of your practice. Your table can be in Microsoft Excel (.xls, .xlsx) format or a Comma Separated Values (.csv) file.

The column names must be contained in the first row of your table. Your uploaded address data will only be used to find the census tracts that your patients reside, and will not be stored.

NO personally identifiable information should be uploaded, e.g., patient medical record number (MRN), name, birthdate, social security number, health information and etc..

Click the button below to select the data file you want to upload. Or drag the file from your local drive to the button.

Upload File

To upload data, click on the "Upload tab". On this screen, click on "Upload File" When prompted, upload the desired file

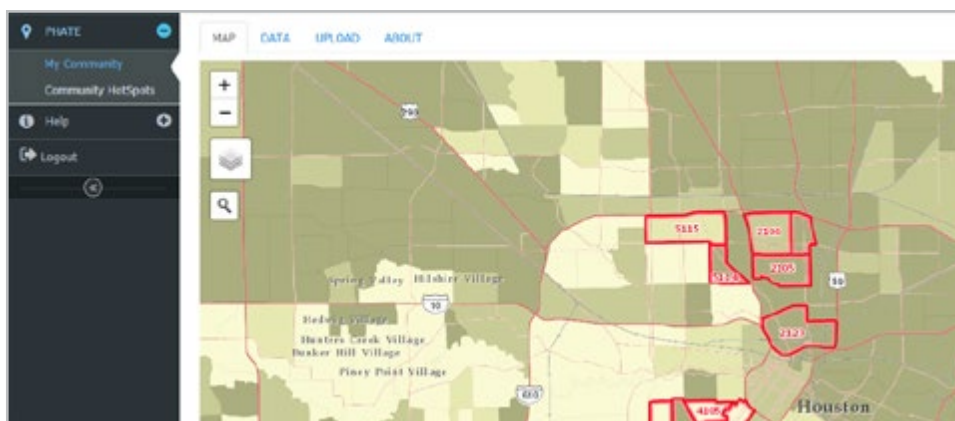
Because of HIPAA (Health Insurance Portability and Accountability Act of 1996), the spreadsheet **should not** include patient medical record numbers, names, birthdates, social security numbers, or health information.

For more information about HIPAA, please consult this document:

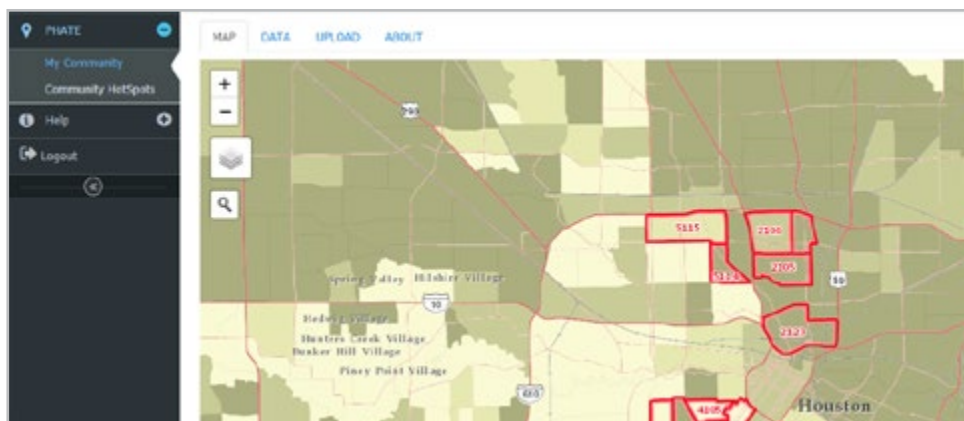
<https://www.hhs.gov/sites/default/files/privacysummary.pdf>

Once uploaded, PHATE asks you to match the column labels with the address, city, state, and ZIP Code.

You should then see a screen that looks like this. Geocoding refers to attaching a latitude and longitude to an address. Once obtained, the location can be mapped to a census tract.



Once geocoded, you will see the red outline of your service area. You may need to zoom in.

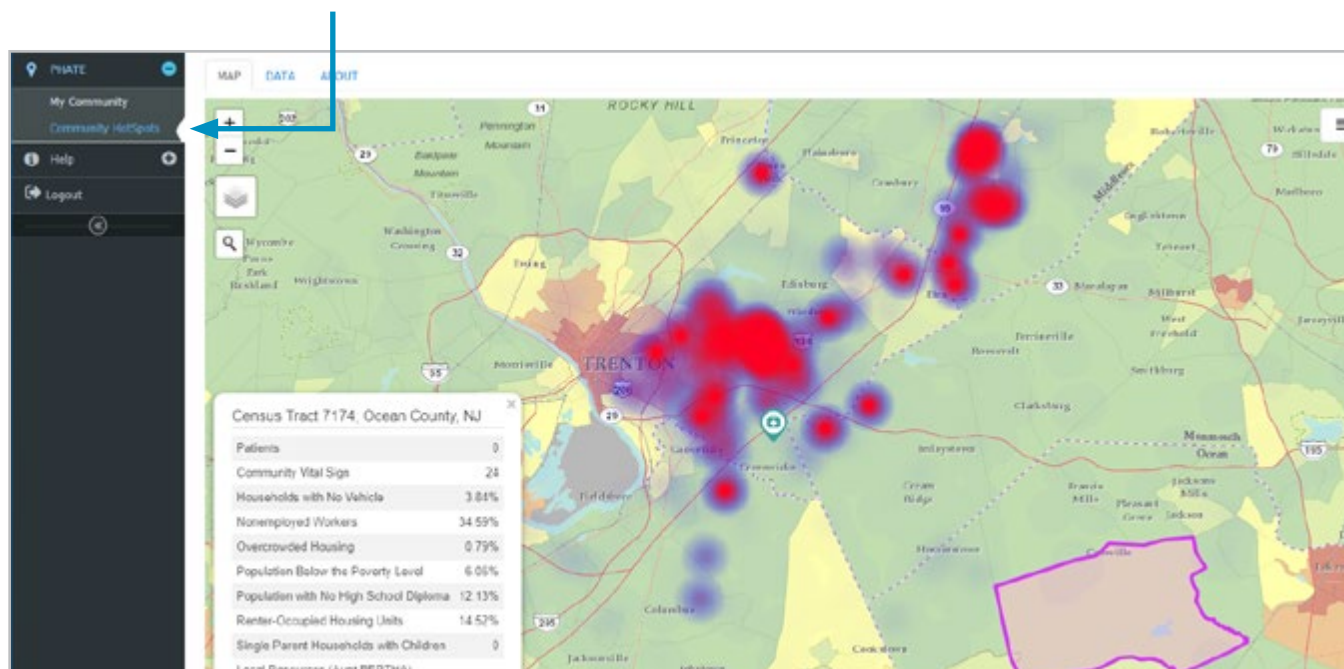


The same menu controls are available for viewing community variables as shown previously,

Community HotSpots Tool

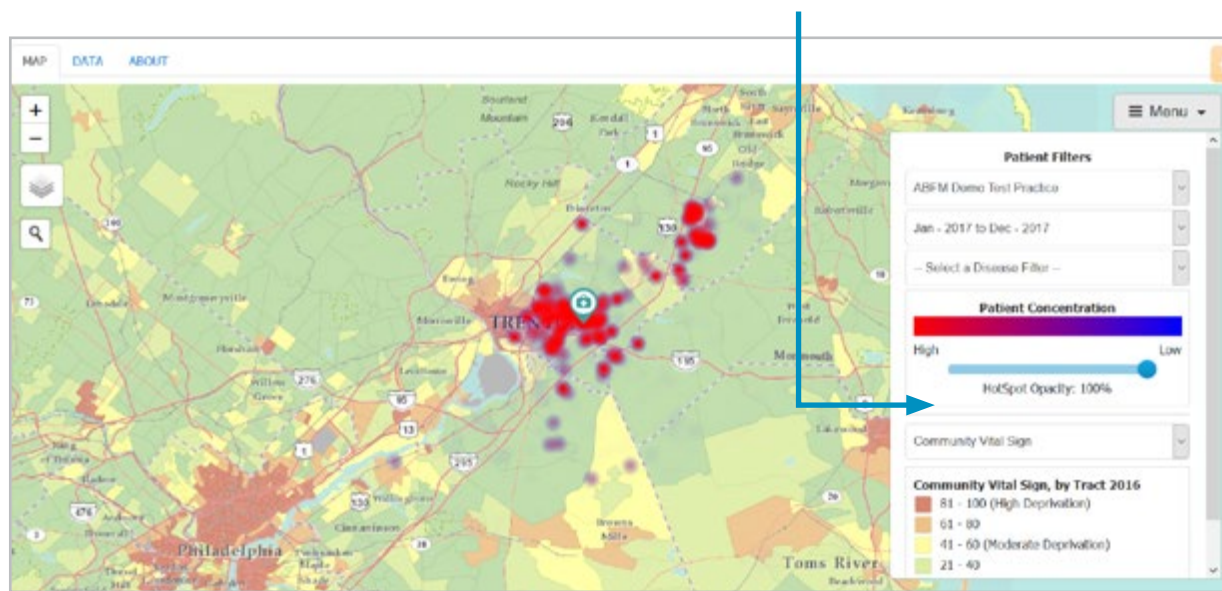
Whereas the My Community tool allows you to visualize the census tracts served by your clinic, the Community HotSpots tool allows you to map the distribution of individual data within the EHR.

To access Community HotSpots, select the option on the navigation menu on the left side of the screen.



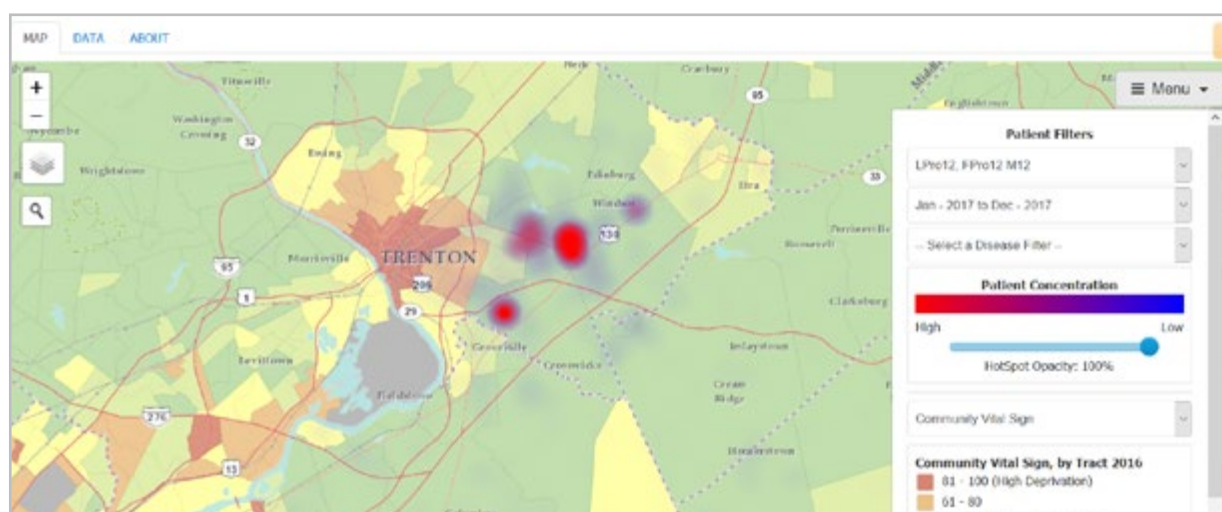
The individual data are represented as a heat map. Red indicates a greater number of individuals with the condition in that geography. If no measures are selected, then the distribution of all patients is mapped.

You can change the opacity of the heat map to be either very light (low HotSpot opacity) or dark (high HotSpot opacity) depending on whether you want to be able to see the heat map, community data, or both.



Under the “Patient Filters” section of the menu, you can adjust the individuals included in the heat map, by selecting the clinicians, time frame, and conditions. Here, we have selected one of the clinicians in the group. Therefore, we are only seeing the patients assigned to him or her.

You can select the time frame included by selecting the desired year, quarter, or month. This selects the patients seen at the clinic during the year, quarter, or month of interest.



Finally, you can select the disease group and quality measure included. As with the **My Community** tool, you can view the underlying data by clicking on the **"Data"** tab.



State	County	Census Tract	Patients (%)	Community Vital Sign	Households with No Vehicle (%)	Nonemployed Workers (%)	Overcrowded Housing (%)	Population Below the Poverty Level (%)	Population with No High School Diploma (%)	Renter-Occupied Housing Units (%)	Single Parent Households with Children (%)	Local Resources (Aunt BERTHA)
US					9.09	32.43	3.33	15.47	13.48	36.1	34.61	
NJ					11.68	30.61	3.25	10.82	11.49	35.53	30.51	
NJ	Mercer	43.10	12.61	10	6.37	24.7	0.33	1.27	3.92	18.64	10.4	health, transit, housing, care, food, work
NJ	Mercer	43.09	5.78	3	2.37	21.53		1.09	3.23	14.53	11.67	health, transit, housing, care, food, work
NJ	Mercer	30.02	4.02	8	2.45	22.54		1.16	6.09	5.73	22.34	health, transit, housing, care, food, work
NJ	Mercer	30.06	3.45	5	6.95	19.7		0.63	3.74	7.33	7.67	health, transit, housing, care, food, work
NJ	Mercer	30.01	3.43	7	1.14	33.23	1	2.93	5.15	11.77	11.88	health, transit, housing, care, food, work

The census tracts visible are those included in the practice's 70% service area. Under Local Resources, PHATE provides links to Aunt Bertha, a website that collates community resources in your community.

PHATE links the census tract to its commensurate zip code and allows you to search across six domains (health, transit, housing, care, food, and work). Clicking on the links takes you the Aunt Bertha page for that zip code and domain.

INTERESTED IN LEARNING MORE?

For the complete curriculum on PHATE™ visit

<https://www.graham-center.org/rgc/maps-data-tools/tools/phate.html>